



BIGGER. BETTER.
MORE **CAPACITY.**
MORE **PRODUCTIVE.**



PRESENTING THE
METERMATIC™ XL.

At 2.25 cubic yards, the Mete-R-Matic® XL is ideal for large turf areas, less reloading and transportation increases efficiency. Just hook up and go. (No hydraulics, no pumps, no engines.)

- ▶ Patented ground-drive and Chevron® belt combines for the most consistent and uniform application in the industry.
- ▶ Patented Chevron belt can consistently handle all types of material such as compost, sand, peat, crumb rubber and calcine clays.
- ▶ Larger capacity hopper, that can easily be filled with a front-end loader, requires fewer trips to refill.

The Mete-R-Matic XL tow-type topdresser features an easy system for hook-up, consistent handling of all types of material, and a galvanized hopper. It delivers the most uniform application in less time.



CALL 1-800-679-8201 for a FREE on-site demonstration, or **VISIT www.TURFCO.com**

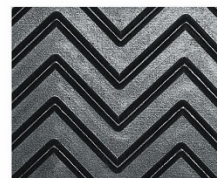


TURFCO



Specifications

Model	Mete-R-Matic XL (#85460)
Drive	Wheels are driven by the ground; all tires mechanically drive the conveyor and brush; no engine; no hydraulic system
Hopper Capacity	60.75 ft ³ (1.72 m ³ ; 2.25 yd ³), galvanized panels
Hopper Size	Top: 80" x 65.5" (2.03 m x 1.66 m) Bottom: 60" x 46" (1.5 m x 1.17 m) Depth: 19" (0.48 m)
Payload	6,000 lb (2,721 kg)
Spreading Width	60" (1.5 m)
Topdressing Speed	Up to 8 MPH (12.8 km/h)
Transport Speed	Up to 8 MPH (12.8 km/h)
Conveyor Belt	Wide rubber composition with patented Chevron belt 60" (1.5 m)
Metering Gate	Taintor gate design is easily adjusted and provides a uniform opening up to 2 1/4" (57 mm)
Brush	9" (228 mm) diameter, polypropylene bristle
Controls	Electrically operated clutch for conveyor and brush drive. Metering gate adjusted by hand.
Clutch	The main clutch is a mechanical ratchet design actuated electrically from the operator's position on the tow vehicle
Wheels & Tires	Two, 33" x 15.50" – 16.5" flotation tires
Hitch	Adjustable height clevis 1" pin hitch
Empty Weight	2,110 lb (957 kg) tow vehicle minimum 30 HP tractor (refer to Operator's Manual for additional requirements)
Electrical Requirements	12 volt DC, negative ground (<i>electrical power provided by tow vehicle</i>)



TURFCO